



# Restriction of Foreign Investment Thailand

**LAWASIA Webinar 29 April 2021**

**Nippita Pukdeetanakul**

JNP Legal Co., Ltd.



**Nippita Pukdeetanakul**  
Managing Director,  
Barrister-at-Law

---

**JNP Legal Co., Ltd.**

399 Sukhumvit Road  
Interchange 21 Building  
21st floor Unit 9  
Klongtoey Nua Sub-district,  
Wattana District,  
Bangkok 10110

Tel:+66 (0) 659795747

E-mail: [nippita@jnplegalthailand.com](mailto:nippita@jnplegalthailand.com)

Website: [www.jnplegalthailand.com](http://www.jnplegalthailand.com)

# Thailand, General Statistics



<b>Indicator</b>	<b>Value</b>
Population	69.8 million
Labour Force	38.2 million
Employment	37.33 million
Unemployment Rate	1%
GDP (2019)	USD 529.8 billion
GNI (2019)	USD 7,260
Inflation (2020)	-1.06%
Minimum Wage (2020)	331

# General Restriction of Foreign Investment in Thailand



## Foreign Shareholding

Foreign owned portion of shares not over 49%



## Directorship

No restriction



## Minimum registered capital

No restriction, unless subject to work permit restriction, BOI or treaty.



## Land ownership

For Land: not possible unless permission from BOI or IEAT is granted. For Condominium - Foreign owned ratio not more than 49% of total registered units.



## Visa

Required / Non-immigrant B or Non-immigrant O Visa



## Funding

No restriction on funding money into Thailand. Only declaration if exceeding THB 450k or USD 15k.

Carrying out cash in THB from Thailand to other countries

- shall not exceed THB 50,000.
- THB 2,000,000 to Vietnam, Yunnan China or countries that share borders with Thailand, the amount of cash shall not exceed



## Work Permit

Required in order to work in Thailand/ The company must have at least 4 Thai National workers/employees & THB2,000,000 registered capital per 1 Foreign worker.



## Official language

Thai



## Tax

Corporate Income Tax rate in Thailand is 20 % on net profit. VAT 7%



## Type of Business

3 lists of restricted businesses under Foreign Business Act B.E. 2542.



## Wage

Minimum wage for Thai National workers for each region of Thailand and Foreign workers based on nationality.



## Incentives

BOI Promotion/ IEAT/ FTA



## **In 2013**

---

### **Ministerial Regulation Prescribing Service Business Not Subject to Application for Foreign Business Permission B.E. 2556 (2013)**

- (1) Securities business and other businesses under the law on securities and securities exchange.
- (2) Derivatives business under the law on derivatives.
- (3) Serving as a trustee under the law on trust for transactions in capital market.

## **In 2016**

---

### **Ministerial Regulation Prescribing Service Business Not Subject to Application for Foreign Business Permission B.E. 2559 (2016)**

- (1) Commercial banking business / Service business as representative offices of banks.
- (2) Life insurance business.
- (3) Non-life insurance business.

# In 2017

---

## **Ministerial Regulation Prescribing Service Business Not Subject to Application for Foreign Business Permission B.E. 2560 (2017)**

- (1) Banking and banking related business.
- (2) Asset Management business.
- (3) Representative Office of foreign corporate entity in international trade business.
- (4) Regional Representative office of foreign corporate entity in international trade business.
- (5) Service business having government body as contractual party.
- (6) Service business having State Enterprises as contractual party.

# In 2019

---

## **Ministerial Regulation Prescribing Service Business Not Subject to Application for Foreign Business Permission B.E. 2562 (2019)**

Business of lending money; leasing office space and providing utilities services; and providing consultation and advice in the following fields:

- management administration;
- marketing;
- human resources; and
- information technology

To subsidiary or related companies where they have ownership or directorship in Thailand.

# Other Obstacles during Covid 19 outbreak



## Visa

To enter Thailand a Certificate of Entry (COE) is required, in addition to normal visa (for business).



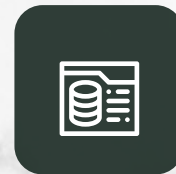
## Work Permit

COE is required in addition to normal business visa



## Flight

Commercial international flights have been banned until further notice.



## Opening of Bank Account for Company

The director must be physically present at the bank.



## Quarantine

14-day quarantine in the hotel listed by the government.



## Application for Foreign Business Certificate

The director must be physically present in Thailand at the time of signing the application form.



## Setting up a Representative Office

The Representative must be physically present in Thailand at the time of signing the application form



# ROAD TO REOPENING

The Centre for Covid-19 Situation Administration (CCSA) yesterday approved a road map to return to normality in three phases covering zoning, vaccination and quarantine

## First phase

April 1-June 30



### Zoning

Colour-coded zones: Remove the one Red Zone (maximum control) permanently.

Keep Orange Zones (control zones) in nine provinces, Yellow Zones (high surveillance) in 14 provinces and Green Zones (surveillance) in 54 provinces.



### Vaccination

2 million doses of Sinovac Covid-19 vaccine to be given to four target groups – essential health workers, chronically ill people, the over-60s and front-line officials and volunteers.



### Quarantine

Thai arrivals without a Vaccine Certificate (VC) or Covid-19 Free Certificate (CFC) but have a Covid-19 test within 72 hours of flying must quarantine for 10 days.

Foreign arrivals without VC but have CFC must undergo a 10-day quarantine.

Foreign and Thai arrivals whose VC is more than 14 days old and less than three months and have CFC could be required only 7-day quarantine.

## Second phase

July 1-Sept 30



### Zoning

All provinces in the country should return to the "new normal", meaning that some activities may be still restricted and social-distancing rules will remain in place.



### Vaccination

Vaccinations: 26 million doses of AstraZeneca vaccines for health workers at hospitals, staff in tourism and hospitality, diplomats, expats and workers in industrial sectors.



### Quarantine

Same as the first phase.

## Third phase

From Oct 1



### Zoning

All lockdowns will be lifted.



### Vaccination

Vaccinations: 35 million doses of AstraZeneca vaccines, the goal being to achieve herd immunity with 45% of the population vaccinated.

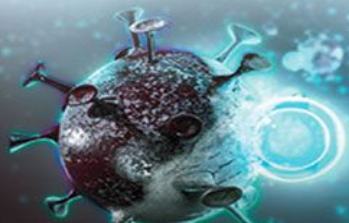


### Quarantine

Quarantine will not be required for some areas.

Visitors only need to show Fit-to-fly certificates and proof of having been tested for Covid-19. Fourteen-day state mandatory quarantine will only be applied to those from countries with Covid-19 virus variants.

Quarantine to be replaced by close observation. Bubble 'Tourism and Seal' measures promoted in Covid-19 hotspots and adjacent areas only.





**Thank you**

**Nippita Pukdeetanakul**  
Managing Director  
Barrister-at-Law

**JNP Legal Co., Ltd.**  
[nippita@jnplegalthailand.com](mailto:nippita@jnplegalthailand.com)